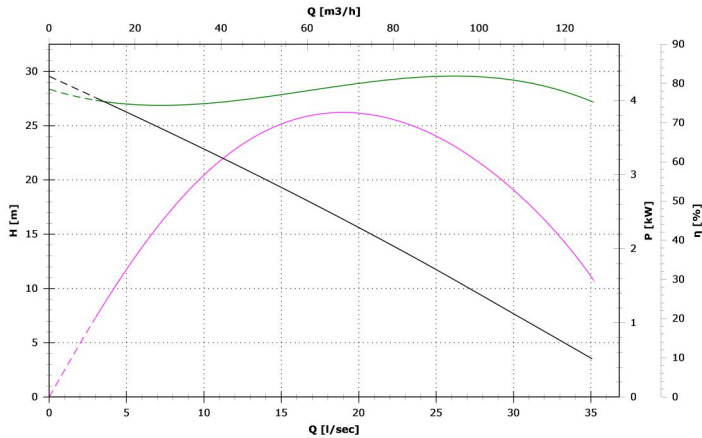


## SMP 550/2/80 AOGT/50



Single-channel closed impeller

Rated power output (P2) 5.5 kW

Free passage 53 mm

## Technical data

Number of poles	2
Rated power output (P2)	5.5 kW
Input power (P1)	6.8 kW
Nominal absorbed current (In)	11.5 A
rated power factor (cos phi)	0.85
Nominal power frequency (f)	50 Hz
Rated nominal voltage(Vn)	400 V
N° phases	3
IPMotor	68
ATEX thermal class	not applicable
insulation class	H

## Constructive characteristics

Outlet	DN80 PN10 DN80 PN16
Outlet orientation	H (horizontal)
Type of starting	D
Weight	73 kg
Standard cable type	07RN-F 4G2.5+3x1
EX cable type	N.A.
Standard paint type	Bicomponent epoxy paint
Maximum acoustic pressure	70 dB
Set of standard mechanical seals	Two Silicon carbide mechanical seals (SiC) and One Carbon-Aluminium oxide mechanical seal (AL)
Probe for water presence	✓

## Use limits

Maximum operating temperature	40 °C
Maximum immersion depth	20 m
PH of treated fluid	6 to 14 pH
max starts per hour	20

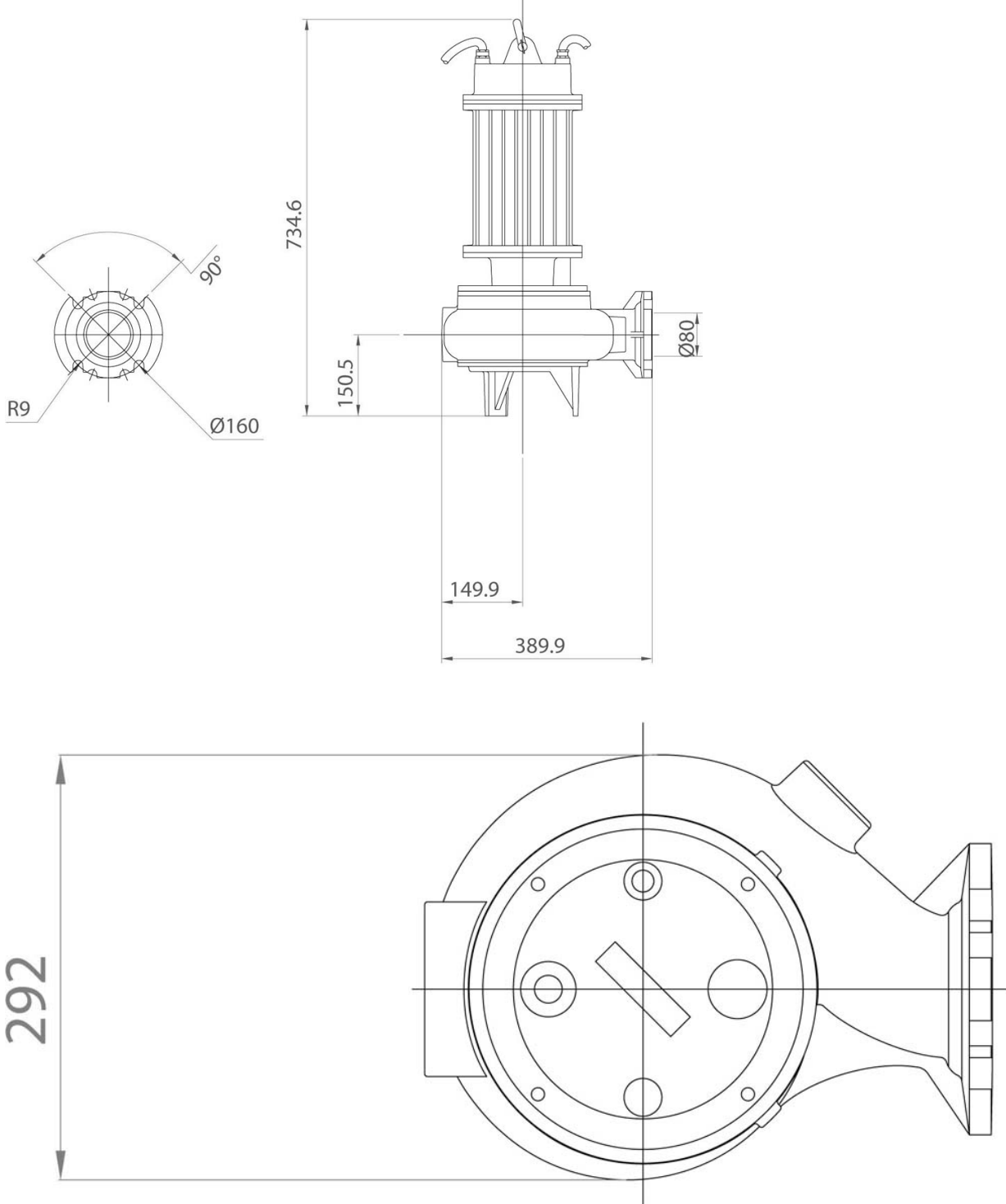
## Materials

Case	Grey Cast Iron - EN-GJL 250 (02)
Shaft	Stainless Steel - AISI 420 (23)
Cooling jacket	Carbon Steel - Fe360 ÷ Fe370 (55)
Standard gasket	Rubber - NBR (77)
EX gasket	Not applicable (00)
Nuts and bolts	Stainless Steel - Class A2-70 (42)
Hydraulic	Grey Cast Iron - EN-GJL 250 (02)
Impeller	Grey Cast Iron - EN-GJL 250 (02)
Cutting disk	Not applicable (00)
Cutter	Not applicable (00)
Grid	Not applicable (00)

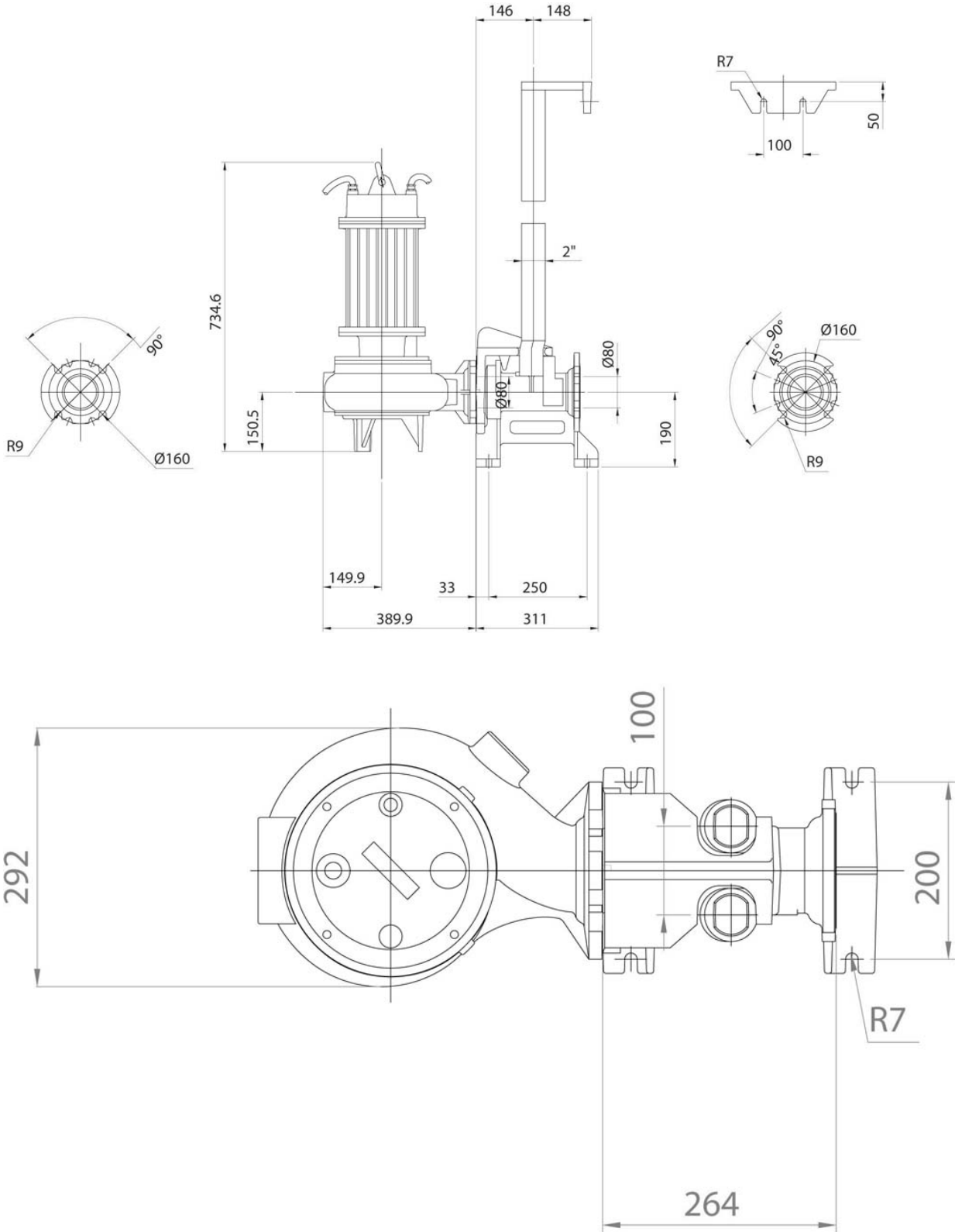
## Test limits

Density of treated fluid	1 Kg/dm³
Viscosity of treated fluid	1 mm²/s

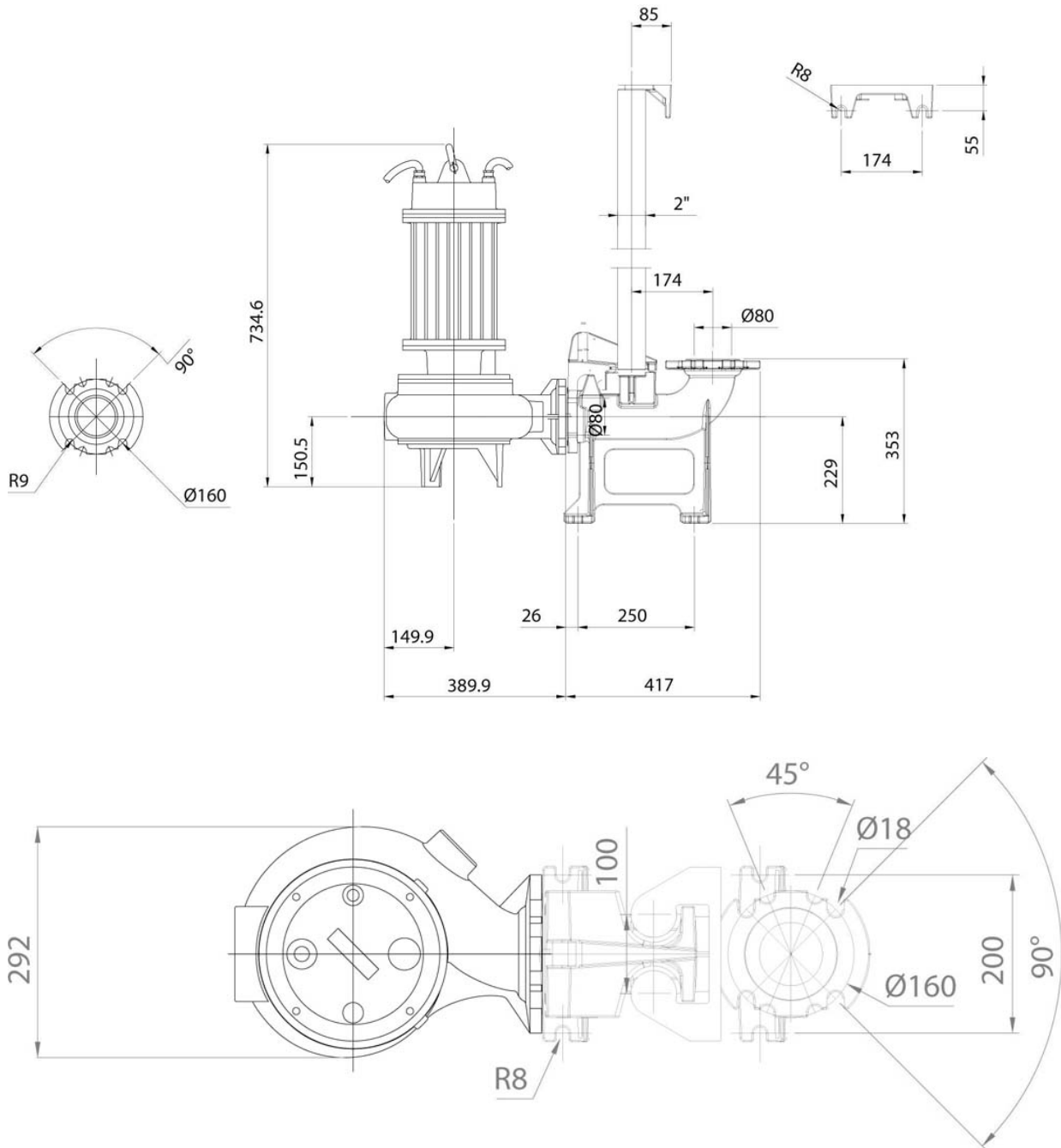
## Pump



## Bottom coupling devices with horizontal outlet







## Outlet bends

